



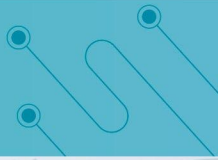
One-Stop Molecular Testing Solution



## **Eight-Channel POC Molecular Analyzer** (Isothermal Amplification Chip Method)

- Flexible-Throughput for Different Application Scenarios
- Compatible with Different Tests
- Single Result in 15-35 Mins

# Eight-Channel POC Molecular Analyzer



7" HD touchscreen

4.5 kg weight

Barcode reader & result printing

8 channels operate independently

Non-slip design



## Benefits



**Strong Flexibility**  
✔ Space saving, benchtop and stackable design



**Excellent Connectivity**  
✔ Access to LIS system



**High Efficiency**  
✔ Scalable with 1-8 samples



## Application Scenario



CDC



Hospital & Clinic



Airport



Customs



Testing Center

# SARS-CoV-2 Nucleic Acid Test Card

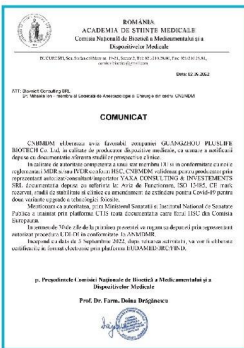
**Test of Intention:**  
For qualitative detection of SARS-CoV-2

**Specimen Type:**  
Nasal swab

**Application:**  
Hospital, Clinic, CDC, Testing Center, Airport, Customs



**Clinical proven:** A comparison study was performed between Pluslife and qPCR in Romania

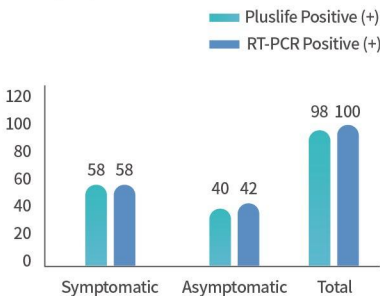


Source: Public Health Directorate (Romania)

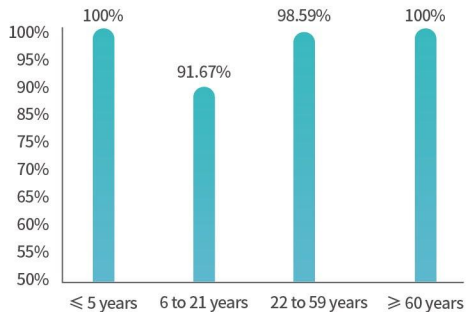


Pluslife	qPCR		
	Positive	Negative	Total
Positive	98	2	100
Negative	2	298	300
Total	100	300	400

Positive results between symptomatic vs asymptomatic



Sensitivity of each age of patient



	Symptomatic	Asymptomatic	Total
Sensitivity	100%	95.2%	98%

# SARS-CoV-2/Flu A/Flu B Nucleic Acid Test Card



### Test of Intention:

For qualitative detection of SARS-CoV-2, Flu A and Flu B within one single test



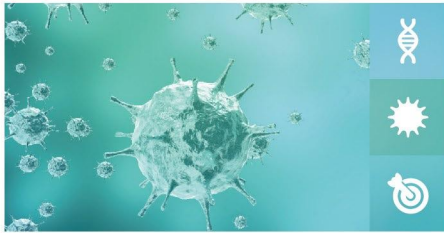
### Specimen Type:

Nasal Swab, nasopharyngeal swab or oropharyngeal swab



### Application:

Hospital, Clinic, CDC, Testing Center, Airport, Customs



LoD: **1000** copies/mL



Up to **3 pathogens** in 1 test

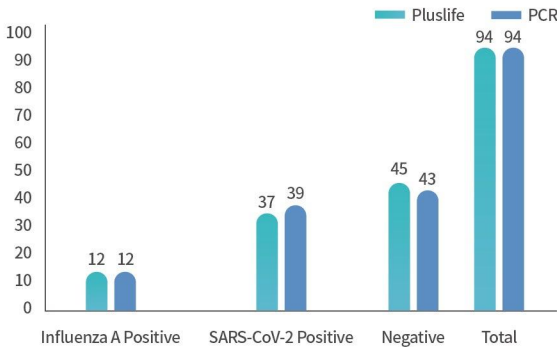


Accuracy: **97.87%**

### Clinical proven:

A comparison study was performed between Pluslife and PCR in New Zealand

Results of comparison



**96.08%**  
Sensitivity

**95.56%**  
Specificity

Source: Clinical Lab (New Zealand)

# Flu A/Flu B/RSV Nucleic Acid Test Card



## Test of Intention:

For qualitative detection of Flu A, Flu B and RSV within one single test



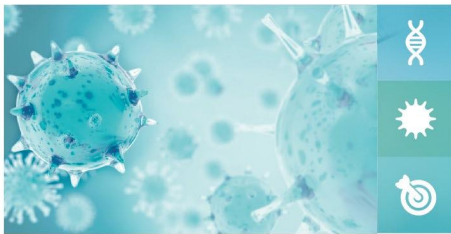
## Specimen Type:

Nasal Swab, nasopharyngeal swab or oropharyngeal swab



## Application:

Hospital, Clinic, Testing Center



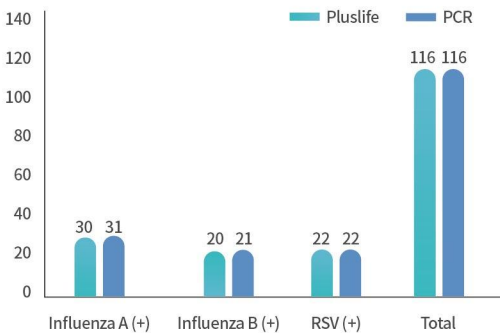
LoD: **1000** copies/mL

Up to **3 pathogens** in 1 test

Accuracy: **97.87%**

**Clinical proven:** A comparison study was performed between Pluslife and PCR in China

Results of comparison



## RSV

**Sensitivity: 100%**

**Specificity: 100%**

## Flu A

**Sensitivity: 96.77%**

**Specificity: 100%**

## Flu B

**Sensitivity: 95.24%**

**Specificity: 100%**

Source: Clinical Lab (China)



# NG/UU Nucleic Acid Test Card

## CT/NG/UU Nucleic Acid Test Card



### Test of Intention:

For in vitro qualitative detection of CT, NG and UU



### Specimen Type:

Vulvovaginal swab or male urethral swab



### Application:

Hospital, Clinic, Testing Center



### Test of Intention:

For in vitro qualitative detection of NG and UU



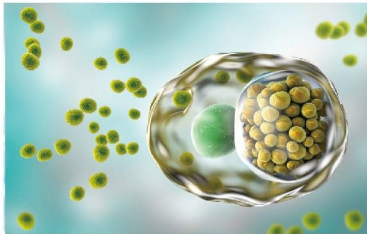
### Specimen Type:

Vulvovaginal swab or male urethral swab



### Application:

Hospital, Clinic, Testing Center



LoD: **1000** copies/mL



Up to **3 pathogens** in 1 test



Accuracy: **99.31%**

### Clinical proven:

A comparison study with 486 samples was performed between Pluslife and qPCR in China

	qPCR			Total
	Positive	Negative		
Pluslife	Positive	196	6	202
	Negative	6	278	284
	Total	202	284	486

**97.03%**  
Sensitivity

**97.89%**  
Specificity

Source: Central Hospital (China)

# HPV 16/18/45 Nucleic Acid Test Card



## Test of Intention:

For qualitative detection of HPV types 16, 18 and 45 within one single test



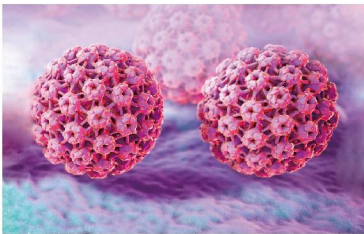
## Specimen Type:

Cervical swab or vulvovaginal swab



## Application:

Hospital, Clinic, Testing Center



LoD: **800** copies/mL



Up to **3 pathogens** in 1 test

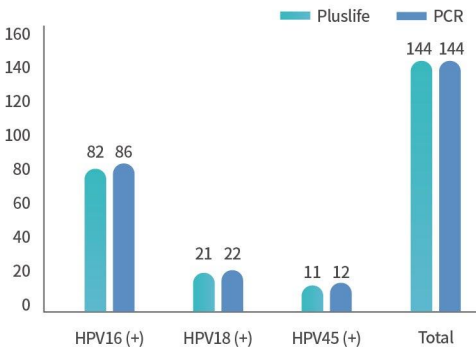


Accuracy: **99.31%**

## Clinical proven:

A comparison study was performed between Pluslife and PCR in China

Results of comparison



Source: Clinical Lab (China)

## HPV 16

Sensitivity: **95.35%**

Specificity: **100%**

## HPV 18

Sensitivity: **95.45%**

Specificity: **100%**

## HPV 45

Sensitivity: **91.67%**

Specificity: **100%**



## Guangzhou Pluslife Biotech Co.,Ltd.



Floor 3, Block E, Runhui Science & Technology Park, No.18 Shenzhou RD,  
Huangpu District, Guangzhou, Guangdong, China



+86-020-31703986



market@pluslife.com



www.pluslife.com



Website



LinkedIn



Line